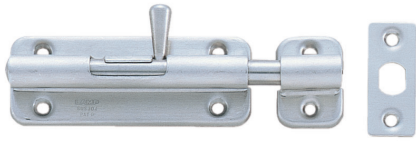


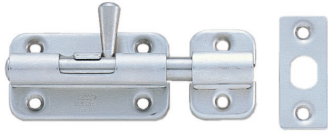
SPRING LOADED BARREL BOLT



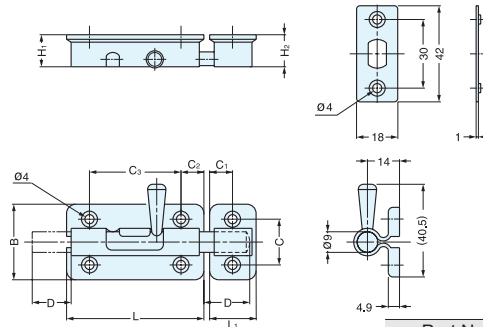
BLS



BLS-90



BLS-60



- Knob springs back into sleeve to keep bolt in locked or unlocked position.
- Supplied with mortise and surface strike.

Part Name	Material	Finish
Body and Plates	304 Stainless Steel	Satin
Bolt and Knob	303 Stainless Steel	Satin

Item No.	L	L ₁	H ₁	H ₂	B	C	C ₁	C ₂	C ₃	D	Weight (g)	Box (pcs)	Carton (pcs)
BLS-60	60 (2-23/64")	25.4 (1")	20	20.4	33 (1-19/64")	20	12.7	10.0	40	17	109	20	200
BLS-90	90 (3-35/64")							12.5	65	24	147	15	150

BARREL BOLT



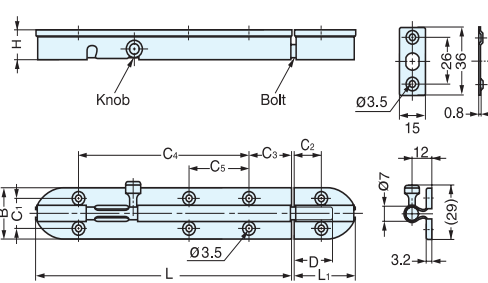
BS



BS-240

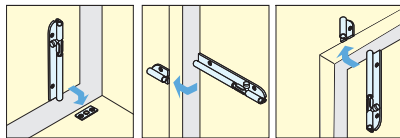


BS-90



- Supplied with mortise and surface strike.

Part Name	Material	Finish
Body and Plates	304 Stainless Steel	Satin
Bolt and Knob	Brass	Nickel



Installation

Item No.	L	L ₁	H	B	C ₁	C ₂	C ₃	C ₄	C ₅	D	Weight (g)	Box (pcs)	Carton (pcs)
BS-90	90 (3-35/64")	36 (1-27/64")	16.5	27 (1-1/16")	16	15	14.5	58	-	24	85	30	300
BS-150	150 (5-29/32")						25.0	100	-		125	20	200
BS-240	240 (9-29/64")						18.5	192	71		30	190	10

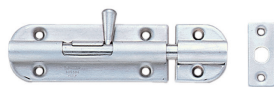
SPRING LOADED BARREL BOLT



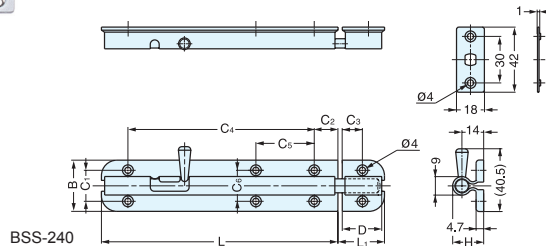
BSS



BSS-240



BSS-90



- Knob springs back into sleeve to keep bolt in locked or unlocked position.
- Supplied with mortise and surface strike.

Item No.	L	L ₁	H	B	C ₁	C ₂	C ₃	C ₄	C ₅	C ₆	D	Weight (g)	Box (pcs)	Carton (pcs)	Part Name	Material	Finish	
BSS-90	90 (3-35/64")	30 (1-3/16")	20	33 (1-19/64")	20.5	13	13	60	-	24	24	142	15	150	Body and Plates	304 Stainless Steel	Satin	
BSS-150	150 (5-29/32")						15	115	-			32	215	10				100
BSS-240	240 (9-29/64")						15	205	60			32	330	6				60