

## SL-PPREC03RAIL2

230V AC TRIAC SWITCH



### PRODUCT FEATURES

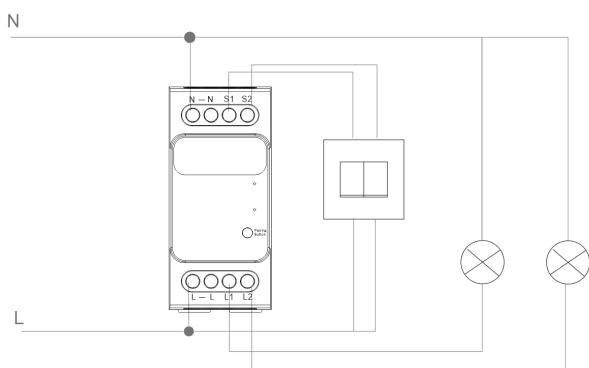
- ▶ 230V AC 2 channel MONO top-hat rail as receiver for Push Power switch
- ▶ Connection of 230V AC products in the domestic installation
- ▶ A maximum of 16 A = 3680 watts @ 220V AC can be used per channel.
- ▶ Up to 10 switch buttons (2-way or 4-way switches) or switch components can be connected.
- ▶ Radio-based range up to 80 meters.
- ▶ Functions: ON - OFF
- ▶ Product has a memory function (last setting)
- ▶ Repeater Mesh function to activate & deactivate

### ASSEMBLY

- ▶ Installation in switch boxes of the domestic installation
- ▶ Installation may only be carried out by qualified electricians.



### CONNECTION PLAN



- N Neutral conductor  
L Manager  
S1, S2 Terminal for cable-connected tilting or Push switch  
L1, L2 Conductor for circuits (max. 16A per circuit)

### DIMENSIONS

- ▶ Housing dimensions (LxDxH): 36 x 77 x 67 mm

### TECHNICAL FEATURES

- ▶ Transfer protocol: RF 433 mhz
- ▶ Range (without mesh): 30 meters (indoors)
- ▶ IP Rating: IP20
- ▶ Input voltage: 110 - 240V AC 50/60Hz
- ▶ Output power: 2 channel / 16 A  
3680 Watt (~ 220V AC per channel)  
1500 Watt (~ 220V AC per channel LED)
- ▶ Standby Power: < 0.5 Watt
- ▶ Receiver Sensitivity: -110dBm
- ▶ Operating temperature: 0°C to +40°C
- ▶ Connecting socket: 4 x 3 mm
- ▶ Cable cross-section: 2.5 mm<sup>2</sup> Rigid cable / solid conductor or stranded cable

### SAFETY AND INSTALLATION INSTRUCTIONS

- ▶ **Attention, this product is operated with 230V AC voltage!**
- ▶ Installation may only be carried out by qualified electricians.
- ▶ This product is not a toy and is not suitable for children!
- ▶ The SIRO LED system is only suitable for indoor use.
- ▶ Unprotected outdoor use is not permitted.
- ▶ Contact with moisture must be avoided at all costs!

**RoHS**

Must not be disposed of with household waste.  
Must not be disposed of in household waste.

SIRO fittings and metal goods factory  
Spiefeldstrasse 12  
4452 Ternberg, Austria

Tel . +43 (0)7256.6020.0  
Fax . +43 (0)7256.8932  
E-mail office@siro.at  
Web . www.siro.at

© 2023 All rights reserved.  
reserved

## GENERAL FUNCTIONS

1, 2, 3, 4

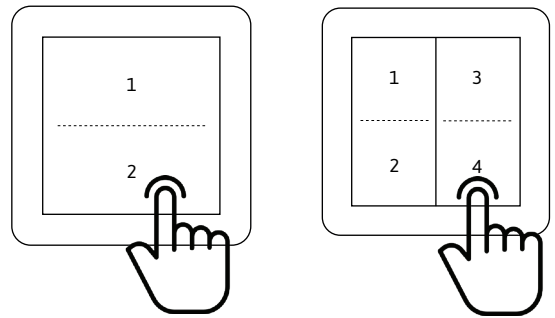
Single click:

Single click with door sensor

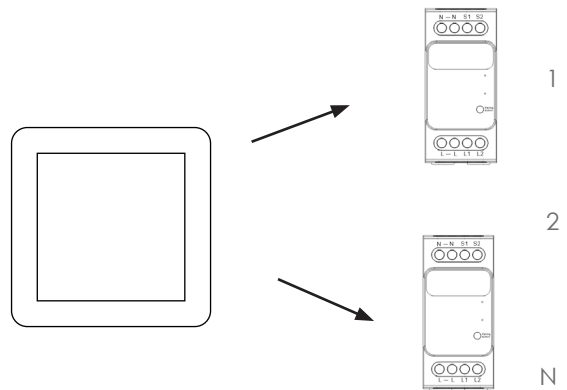
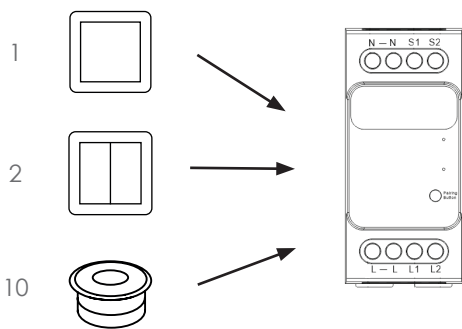
2 or 4-way buttons

Switching on or off

Switching on or off



## POSSIBLE COMBINATIONS



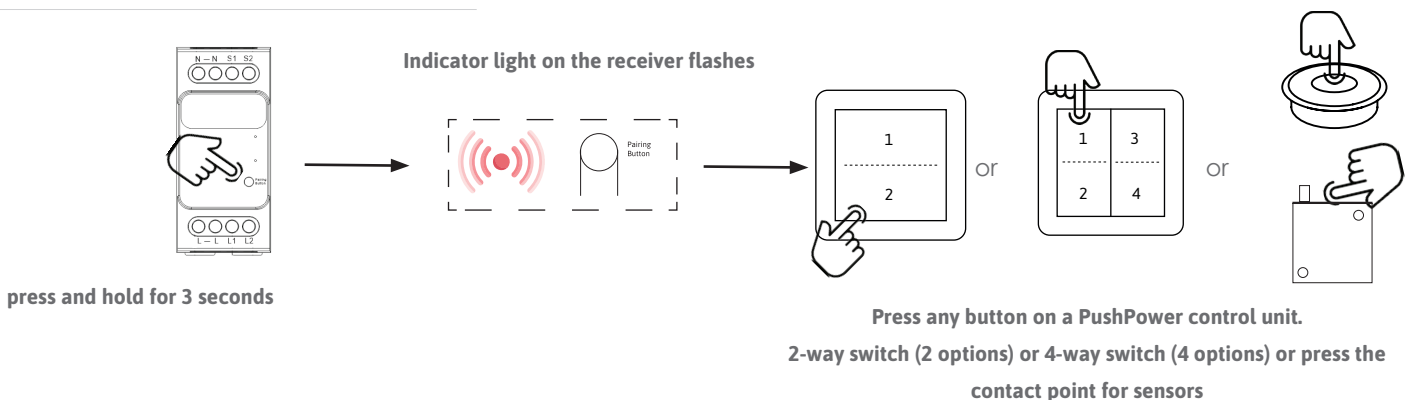
### More controls on one receiver

a maximum of 10 PushPower control units (sensors, push buttons, etc.) can be connected to one receiver.

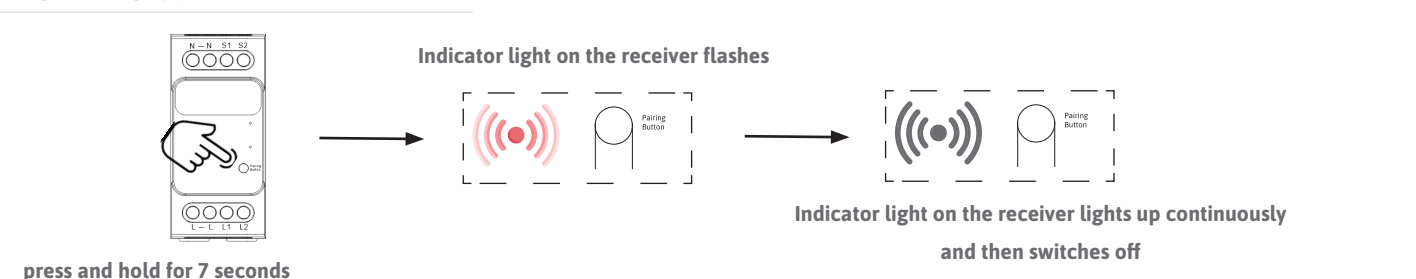
### One control on several receivers

1 PushPower control unit can control any number of receivers to control.

## CONNECTING THE CONTROL UNIT & RECEIVER



## RESET RECEIVER



RoHS 

Must not be disposed of with household waste.  
Must not be disposed of in household waste.

SIRO fittings and metal goods factory  
Spiefeldstrasse 12  
4452 Ternberg, Austria

Tel . +43 (0)7256.6020.0  
Fax . +43 (0)7256.8932  
E-mail office@siro.at  
Web . www.siro.at

© 2023 All rights reserved.  
All rights reserved