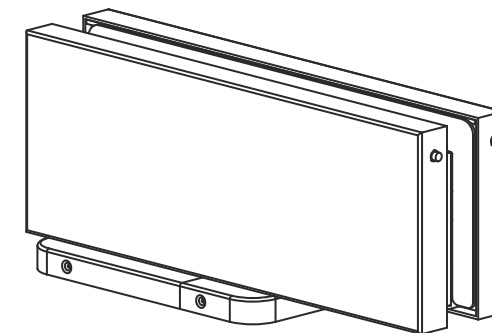
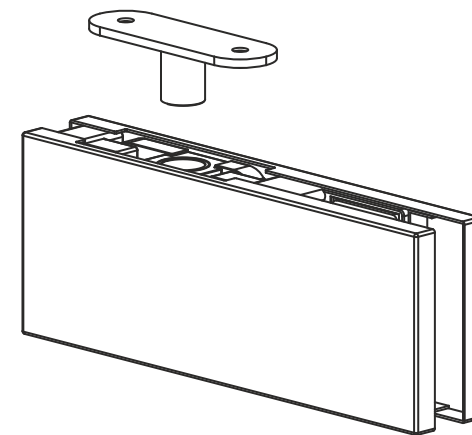
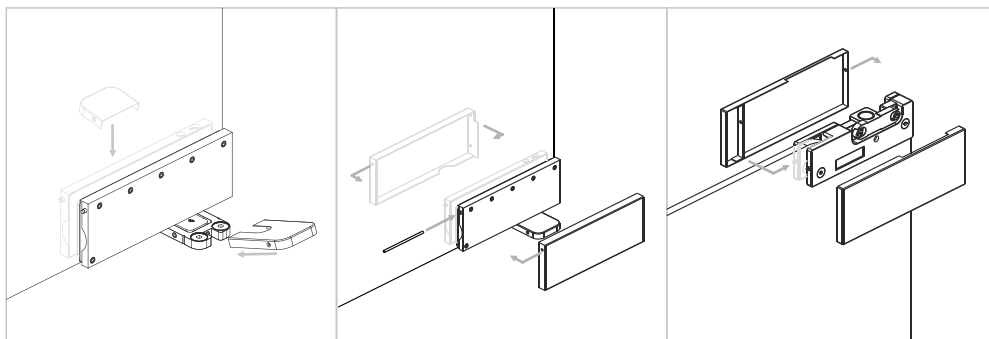
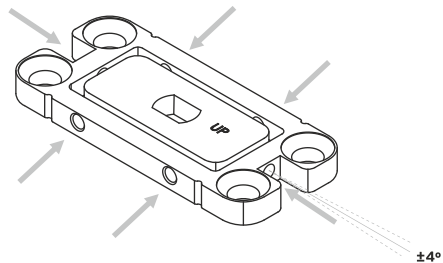


Ajustar o alinhamento da porta na base.
Verificar e bloquear os seis parafusos de ajuste, para garantir o posicionamento definido e o bom funcionamento /

Adjust the door's alignment on base.
Check and lock the six adjusting screws, to guarantee the good positioning and its function /

Ajuster l'alignement de la porte à la base.
Vérifier et bloquer les six vis de réglage, pour garantir la position choisie et son bon fonctionnement /

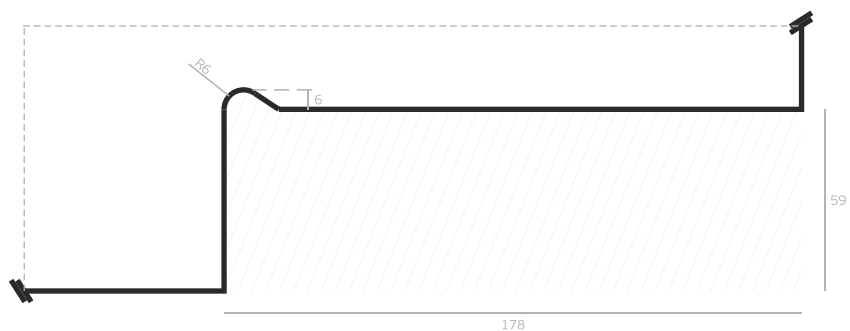
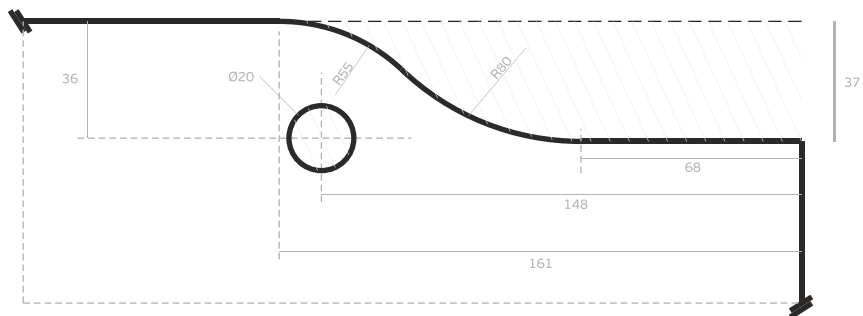
Ajuste el alineamiento de la puerta en la base.
Verificar y bloquear los seis tornillos de ajuste, para garantizar el buen posicionamiento y su función



IN.81.203

KIT DE PIVOT HIDRÁULICO PARA PORTAS DE VIDRO /
HYDRAULIC PIVOT SET FOR GLASS DOORS /
KIT DE PIVOT HYDRAULIQUE POUR PORTES EN VERRE /
KIT DE PIVOTE HIDRAULICO PARA PUERTAS DE CRISTAL

GC40 - entalhe / glass cut / découpe dans le verre / taladro en cristal



Ferramentas necessárias /
Tools necessary /
Outils nécessaires /
Herramientas necesarias

