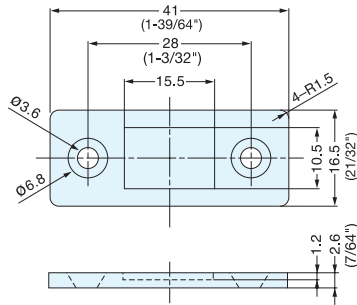


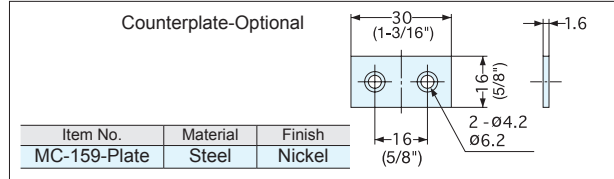
ULTRA THIN & STRONG MAGNETIC CATCH



MC-158, MC-159



- Unique ultra thin magnetic catch design with extra strong magnetic force.
- Note: 1) Max. temperature: 80°C (176°F)
- 2) To avoid breakage, counterplate should not hit magnet.
- 3) Screw heads should not protrude above the base plate.
- 4) Screws not included, use M3 flat head or equivalent.
- 5) Counterplate MC-159-Plate sold separately.



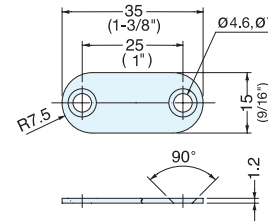
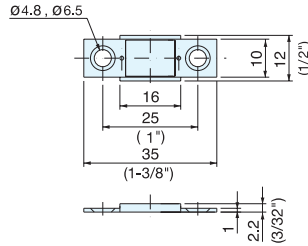
Item No.	Magnetic Force (kg)	Weight (g)	Box (pcs)	Carton (pcs)
MC-158	1.5 (3.3 lbs)	12	200	1000
MC-159, MC-159/BL	4.0 (8.8 lbs)	12	200	1000

Part Name	Material	Finish
Magnet	Neodymium	Nickel/Black (MC-159 only)
Base/Yoke	Steel	

ULTRA THIN MAGNETIC CATCH



MC-YN001P



- Unique ultra thin magnetic catch design ideal for tight spaces.
- Counterplate included.
- Strong magnetic force.
- Note: 1) Max. temperature: 80°C (176°F)
- 2) To avoid breakage, counterplate should not hit magnet.
- 3) Screw heads should not protrude above the base plate.

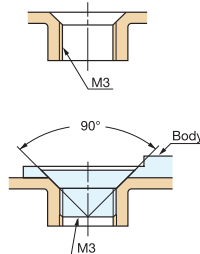
Item No.	Magnetic Force (kg)	Weight (g)	Box (pcs)	Carton (pcs)
MC-YN001P	2.7 (5.9 lbs)	7.5	100	1000

Part Name	Material	Finish
Magnet	Neodymium	Nickel
Base/Yoke/Counterplate	Steel	

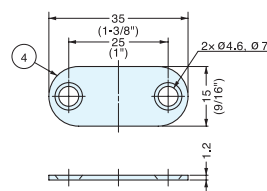
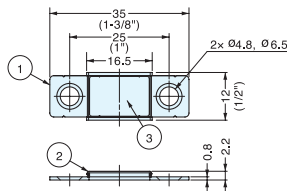
ULTRA THIN STAINLESS STEEL MAGNETIC CATCH



MC-YN015SP



- Ultra-thin magnetic catch with strong rare-earth (neodymium) magnet.
- 304 stainless steel yoke for high corrosion resistance.
- Magnetic catch includes self-tapping screws.
- Note: 1) Magnetic force may be affected when used in/around water or high humidity.
- 2) Max. recommended temperature: 80°C (176°F).
- 3) Counterplate should not come into direct contact with magnet when closing.
- 4) Screw heads should not protrude above the base plate.



No.	Part Name	Material	Finish
①	Main Body	Stainless Steel	Plain
②	Yoke	304 Stainless Steel	
③	Magnet	Neodymium	Epoxy Coating
④	Counterplate	Stainless Steel	Plain

Item No.	Magnetic Force (kg)	Weight (g)	Box (pcs)	Carton (pcs)
MC-YN015SP	2.3 kg (5.0 lbs)	7.3	100	2000