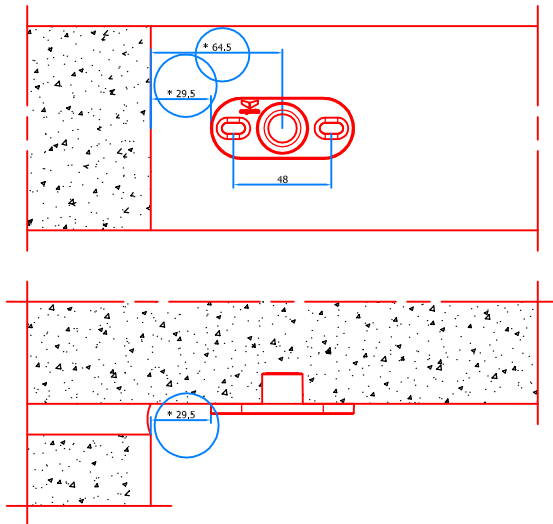
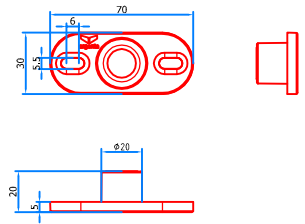
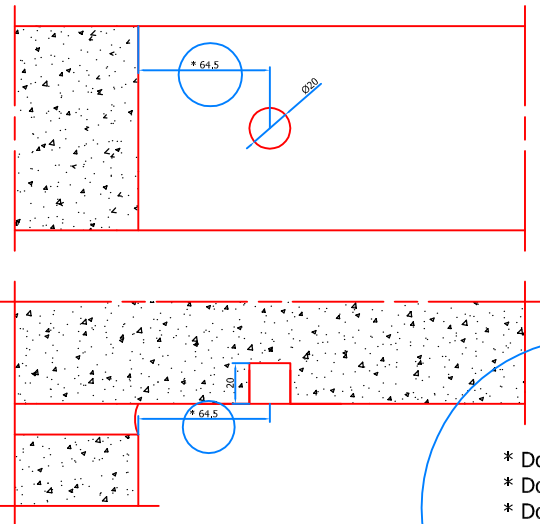


Top part wall/frame



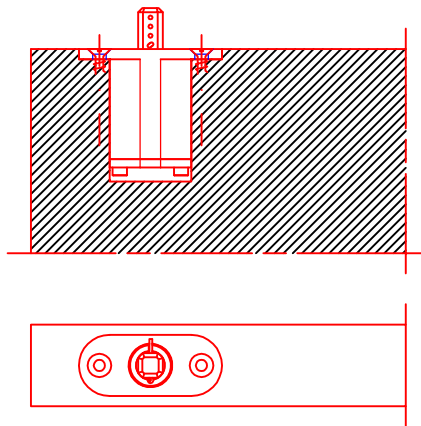
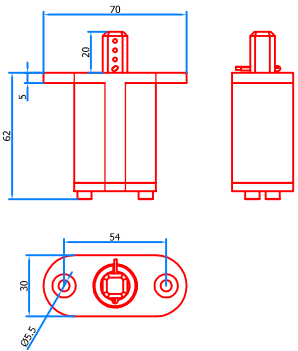
\* Door 40mm: =  
 \* Door 45mm: =  
 \* Door 50mm: +1mm  
 \* Door 54mm: +2mm

Wall/Frame

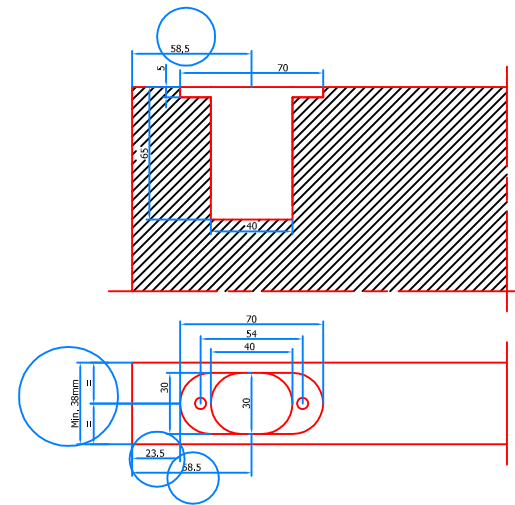


\* Door 40mm: =  
 \* Door 45mm: =  
 \* Door 50mm: +1mm  
 \* Door 54mm: +2mm

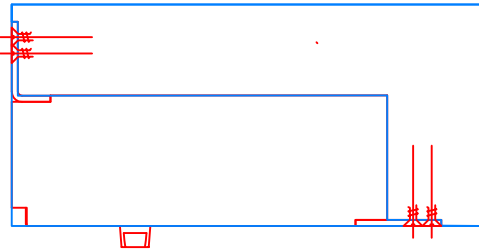
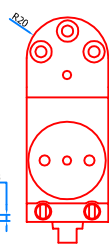
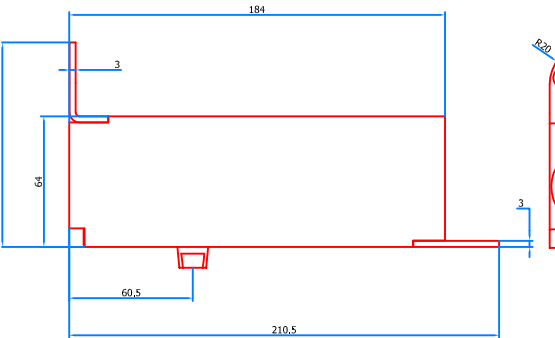
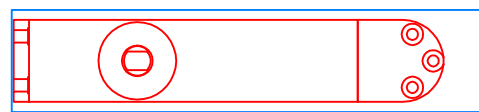
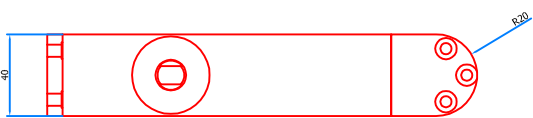
Top part door



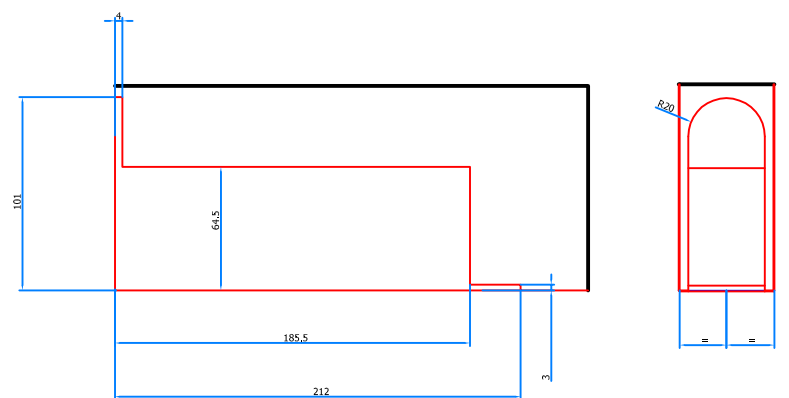
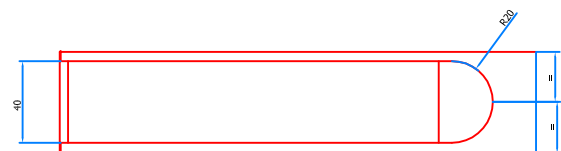
Top side Door



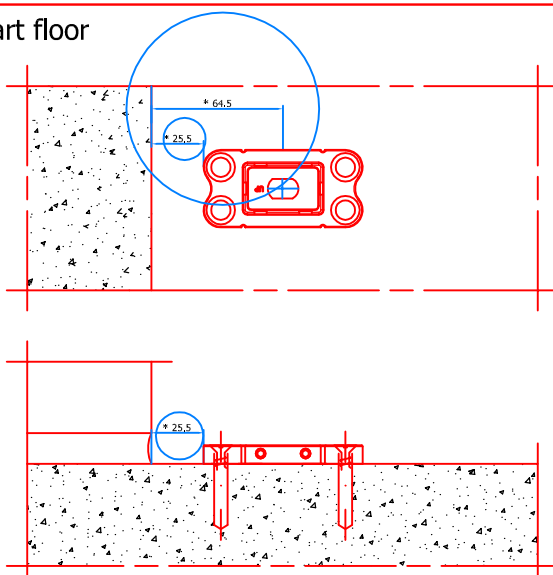
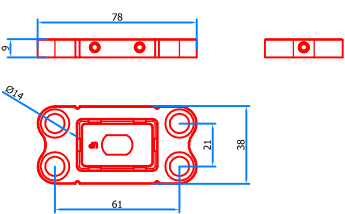
Bottom part door



Bottom side Door

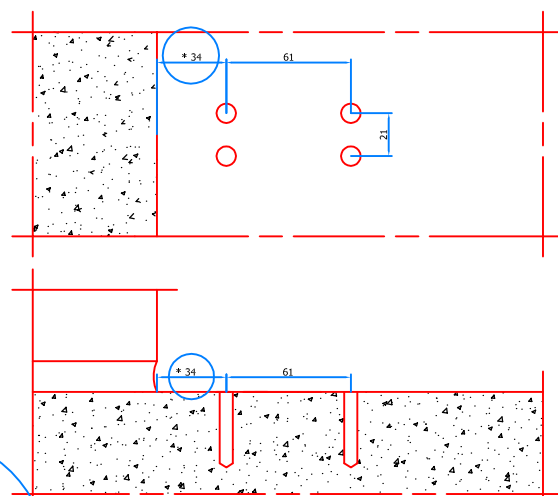


Bottom part floor



\* Door 40mm: =  
 \* Door 45mm: =  
 \* Door 50mm: +1mm  
 \* Door 54mm: +2mm

Floor



\* Door 40mm: =  
 \* Door 45mm: =  
 \* Door 50mm: +1mm  
 \* Door 54mm: +2mm